



# URBAN FORE\$TRY FACTS

## MISSISSIPPI • 2019



EACH DOLLAR INVESTED IN URBAN  
& COMMUNITY FORESTRY (U&CF)  
GENERATED ADDITIONAL

**\$0.57**

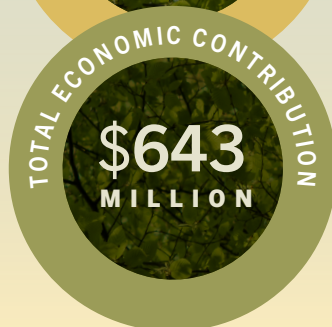
TO THE STATE

**ECONOMIC IMPACT\***

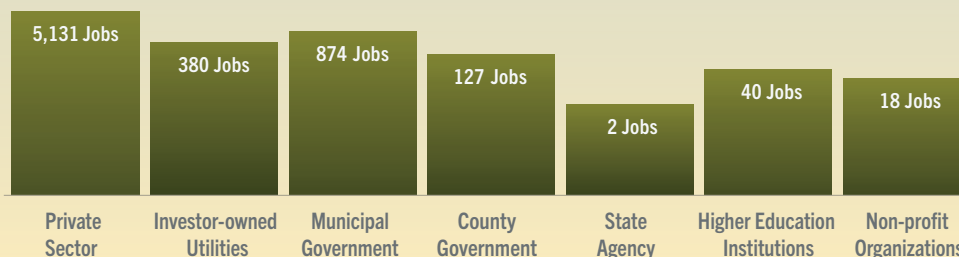
FOR EACH JOB IN U&CF, ADDITIONAL

**0.32**

JOBS WERE ADDED TO THE STATE



### TOTAL JOBS BY SECTOR



STATE AND LOCAL TAXES

**\$21.89**

MILLION DIRECTLY

**DIRECT TAX CONTRIBUTION**

FEDERAL TAXES

**\$28.94**

MILLION DIRECTLY



For more information and resources, visit [SouthernForests.org](http://SouthernForests.org)

*This project was made possible by a grant from the USDA Forest Service, an equal opportunity provider, employer, and lender.*

*\*Calculated using Social Accounting Matrix (SAM) Multiplier.*

