



URBAN FORE\$TRY FACTS

SOUTH CAROLINA • 2019



EACH DOLLAR INVESTED IN URBAN
& COMMUNITY FORESTRY (U&CF)
GENERATED ADDITIONAL

\$0.66

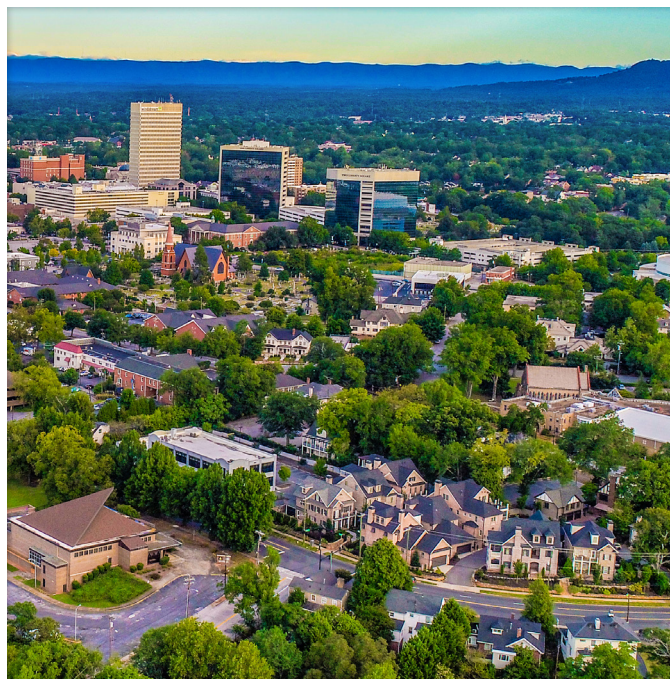
TO THE STATE

ECONOMIC IMPACT*

FOR EACH JOB IN U&CF, ADDITIONAL

0.39

JOBS WERE ADDED TO THE STATE



STATE AND LOCAL TAXES

\$40.59

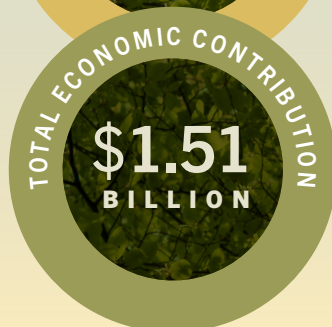
MILLION DIRECTLY

DIRECT TAX CONTRIBUTION

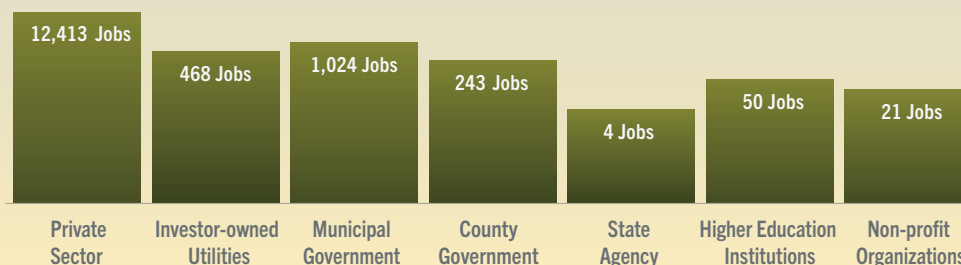
FEDERAL TAXES

\$73.94

MILLION DIRECTLY



TOTAL JOBS BY SECTOR



For more information and resources, visit SouthernForests.org

This project was made possible by a grant from the USDA Forest Service, an equal opportunity provider, employer, and lender.

**Calculated using Social Accounting Matrix (SAM) Multiplier.*

